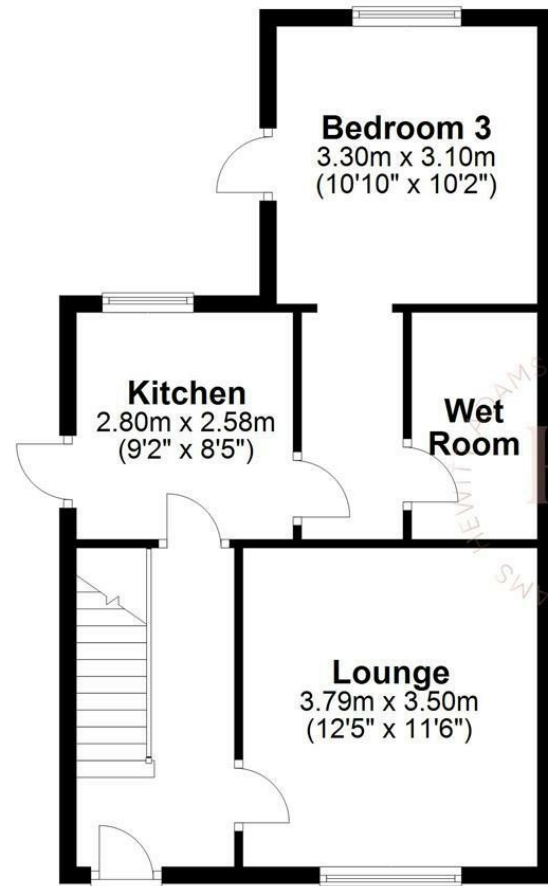




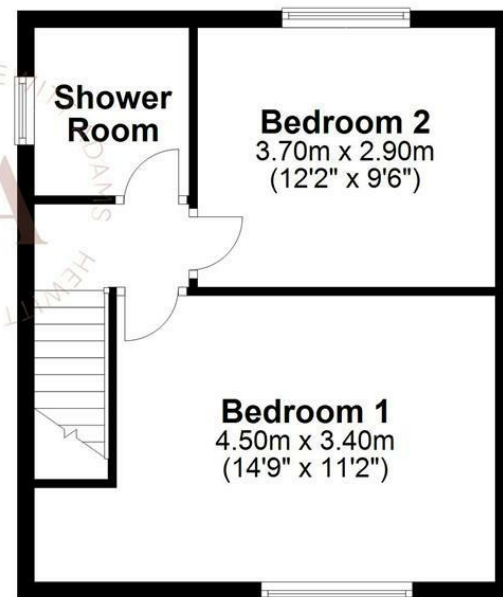
Ground Floor

Approx. 46.9 sq. metres (504.7 sq. feet)



First Floor

Approx. 35.7 sq. metres (384.5 sq. feet)



Total area: approx. 82.6 sq. metres (889.2 sq. feet)
For illustration purposes only - not to scale

Palatine Road, Bromborough, Wirral CH62 2DY

£165,000

3 Bedroom 1 Reception 2 Bathroom E

****Three Bedroom Semi - Large Corner Plot - Huge Garden - Sold With No Chain****

Hewitt Adams is delighted to offer to the market with NO ONWARD CHAIN this three bedroom semi on the POPULAR Palatine Road in Bromborough.

A perfect property for FIRST TIME BUYERS or young families. You will not believe the size of this REAR GARDEN!

With a RECENTLY MODERNISED KITCHEN, the property also has previously been EXTENDED to offer a ground-floor bedroom or extra reception room and a wet-room (in addition to the upstairs shower-room)

In brief the accommodation affords; entrance hall, lounge (currently used as a study), kitchen, ground-floor bedroom, wet-room. Upstairs there are two bedrooms and a shower-room.

The property boasts a HUGE REAR GARDEN which is a real selling point with this property.

Call Hewitt Adams on 0151 342 8200 to view.

Front Entrance

Into;

Hall

Staircase, radiator

Lounge

12'5" x 11'5" (3.79 x 3.5)

Double glazed window, radiator, power points

Currently used as a bedroom and office

Kitchen

9'2" x 8'5" (2.8 x 2.58)

Wall and base units, inset sink, integrated appliances, side door, double glazed window

Bedroom 3 / Dining Room

10'2" x 10'9" (3.1 x 3.3)

Double glazed window, radiator, power points, patio door to garden

Used as a bedroom currently, but has previously been used as a dining room and a second living room

Wet-Room

Comprising W.C, shower, wash hand basin

UPSTAIRS

Bedroom 1

14'9" x 11'1" (4.5 x 3.4)

Double glazed window, radiator, power points

Currently utilised by the owner as the main lounge / living area

Bedroom 2

9'6" x 12'1" (2.9 x 3.7)

Double glazed window, radiator, power points

Currently used as a dressing room

Shower-Room

Modern shower-room comprising shower, low level W.C, wash hand basin, towel rail

EXTERNALLY

Large landscaped rear garden which is a fabulous size. With patio area, large lawned garden and bbq area.

